



# Axicon 12000 2D Verifier Accessories

## *A Range of Accessories for your Axicon 12000*

### **IQ/OQ/PQ Solutions from Axicon**

#### **IQ/OQ/PQ - What is it?**

An integral part of many ISO 9000 systems, Installation, Operation and Performance Qualification is a process of establishing evidence that provides a high degree of assurance that your QA system accomplishes its intended requirements.

#### **Installation & Operation Qualification**

Once only found in the pharmaceutical sector, the use IQ/OQ/PQ documentation is becoming increasingly popular across a wide range of industries.

Our response has been to create an off the shelf package for use with our 12000 series verifiers. This includes guidance and instruction on calibration, checking for industry standards, setting reporting options as well as ensuring traceability of your verification activity.

The IQ/OQ documentation can be purchased separately from the PQ documentation and test kit.

All Axicon Performance Cards are traceable to international standards.

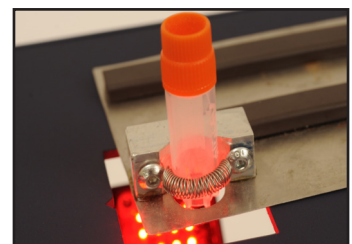
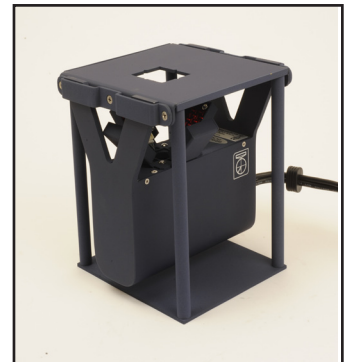
#### **Presentation Mount**

Place your Axicon 12000 in the purpose built frame, place your barcode on top and press the button - It's as simple as that.

Provides increased ease of use and negates the need to lift and move the verifier. Particularly useful in areas of high use and also when verifying small or cylindrical objects.

#### **Tube and Vial Holder**

Used in conjunction with the Presentation Mount, this neat device allows for repeatedly accurate placement of very small DataMatrix codes printed on tubes, vials etc...



# Axicon 12000 2D Verifier Accessoires



## Technical Reference Cards

An essential accessory for those printing DataMatrix barcodes on-line - A precision set created to help you maximise the performance of your on-line printing & scanning systems.

Ever wondered why the results from your on-line scanning system differ from those on your ISO grade verifier?

The Answer: Results from the scanner will vary according to the distance from the barcode, angle of scan, ambient light levels, the wavelength of light.... The more you think about it, inconsistent scanning results are almost inevitable!

The Axicon Technical Reference cards help eliminate this issue by providing you with the tools and information you need to optimise the position of your on-line scanner. The full set comprises 94 DataMatrix barcodes, each with a finely engineered defect specifically designed to help you find the ideal location of your scanning system - Just run through the cards in order to establish the correct positioning of your scanner.

Available as a complete set or as individual packs which can be purchased as required to check for specific problem areas e.g. Fixed Pattern Damage, Modulation, etc...

Not sure which set is most suitable for your application? Contact the Axicon support team on +44 (0) 1869 351155 or [info@axicon.com](mailto:info@axicon.com)

- Pack 1 - Fixed Pattern Damage (small gaps in the 'L' pattern) - pack of 5 cards
- Pack 2 - Fixed Pattern Damage (large gaps in the 'L' pattern) - pack of 5 cards
- Pack 3 - Fixed Pattern Damage (double gaps in the 'L' pattern) - pack of 5 cards
- Pack 5 - Missing Clock Modules - pack of 5 cards
- Pack 6 - Quiet Zone Marks - pack of 5 cards
- Pack 7 - Extra Marks in Clock Track - pack of 5 cards
- Pack 8 - Symbol Contrast - pack of 5 cards
- Pack 9 - Axial Non-Uniformity Errors - pack of 3 cards
- Pack 10 - Grid Non-Uniformity Errors - pack of 4 cards
- Pack 11 - Unused Error Correction - pack of 4 cards
- Pack 12 - Print Gain Variations - pack of 5 cards
- Pack 13 - Modulation Errors - pack of 4 cards
- Pack 14 - Symbol Contrast (pale bars on white background) - pack of 5 cards
- Pack 15 - Modulation (full size grey modules) - pack of 5 cards
- Pack 16 - Smudges - pack of 3 cards
- Pack 17 - Thin Vertical 'L' - pack of 3 cards
- Pack 18 - Gaps in the Clock Track - pack of 5 cards
- Pack 19 - Gaps in Horizontal 'L' - pack of 5 cards
- Pack 20 - Gaps in Data Region - pack of 5 cards
- Pack 21 - Multiple Gaps - pack of 2 cards



**axicon**  
THE BARCODE EXPERTS

**Pacific Barcode Inc.**



**Label Printing Solutions**

27531 Enterprise Circle West  
Temecula, CA 92590  
P: 800.508.2535 F: 951.587.8718  
[www.pacificbarcode.com](http://www.pacificbarcode.com)